

# MAYOR'S TASKFORCE AGAINST DOMESTIC VIOLENCE

## 2022 STATISTICAL REPORT

***Mission Statement: The members of the Mayor's Taskforce against Domestic Violence commit to hold domestic violence offenders accountable and ensure victim safety through collaboration, education, and prevention for a safe and just community.***

### *Development of This Report*

A multi-year strategic plan was developed by members of the Mayor's Taskforce against Domestic Violence. As part of this strategic plan, the members agreed to present annual statistical data, highlighting the realities of domestic violence within Shawnee County, KS.

This report captures the data pulled from the Shawnee County District Attorney's Office, Kansas Legal Services (KLS), law enforcement agencies, Family Peace Initiative, medical/health providers, and victim service providers in calendar year 2022. Although every attempt has been

made to verify that the data provided in this report is accurate, it is important to note that this data may be subject to error (e.g., data entry error, etc.). On behalf of every member of the Mayor's Taskforce against Domestic Violence, thank you for taking the time to review this report.

### *Findings, Strengths, Challenges, and Opportunities*

The following strengths of the annual report were identified. First, similar to last year, there was great participation across a number of service providers in Shawnee County who shared their data and statistics with the other members of the Taskforce. This level of participation continues to be critical to understanding the full scope of domestic violence within Shawnee County.

Now that we have two years of annual statistical data compiled, Members of the Mayor's Taskforce against Domestic Violence can begin to analyze trends present in our community and initiate discussion around areas for further growth and improvement.

For example, in looking at how our community holds domestic violence offenders accountable for their behavior, we can look more

closely at the statistics provided by the Shawnee County District Attorney's Office, local law enforcement agencies, and battering intervention programs. Between 2021 and 2022, the Shawnee County District Attorney's Office saw a 3.3% decrease in the number of domestic violence cases reported to their office and a 5.4% decrease of cases from their office that were filed. Collectively, the Topeka Police Department, Shawnee County Sheriff's Office, and the Washburn University Police Department saw a 1.8% increase in the number of domestic violence-related calls between 2021 and 2022. However, the number of domestic violence arrests increased by 17.1% from 2021 to 2022. Finally, the number of battering intervention program assessments that have been completed remained steady from



2021 to 2022.

Finally, this report establishes the need for continued community awareness and violence prevention education. It is clear that domestic violence continues to be a significant concern within Shawnee County and does not just impact the abuser and their direct victims. It affects friends, family members, bystanders, neighborhoods, schools, employers, and many others. In 2022, Members of the Mayor's Taskforce against Domestic Violence placed a greater emphasis on community education.

*Shawnee County District Attorney’s Office*

“The Shawnee County District Attorney’s Office is responsible for the charging and prosecution of” crimes related to domestic violence...It is the mission of the District Attorney to carry out these responsibilities in an organized, efficient, and ethical manner and pursue justice and public safety for our community as a whole”

(snco.us).

In calendar year 2022, the Shawnee County District Attorney’s Office had:

**1,193 referrals for domestic violence cases and 778 cases that were filed.**

Additional data regarding domestic violence cases prosecuted by the Shawnee County District Attorney’s Office have been presented in the table below.



| Shawnee County District Attorney’s Office—Domestic Violence Cases               | 1/1/22 to 12/31/22 |
|---|--------------------|
| Number of Successful Cases Prosecuted   | 192                |
| Number of Cases Prosecuted in Which Diversion Was Used                          | 18                 |
| Number of Cases Prosecuted Where Battering Intervention Program (BIP) Referrals | 16                 |
| Number of Cases in Which Diversion Was Used and BIP Referrals Were Required     | 16                 |

*Kansas Legal Services*

Kansas Legal Services (KLS) offers free legal representation to individuals who file protection from abuse and protection from stalking orders in Shawnee County. This is a valuable resource to

many victims of domestic violence as a means for increasing their safety and their children’s safety. In 2022, KLS represented **138** clients who are Shawnee County residents.

Additional data regarding service provision by KLS to Shawnee County residents have been presented in the table below.



| KLS—Shawnee County Client Data   | 1/1/22 to 12/31/22 |
|--|--------------------|
| Number of Protection Orders Dismissed  | 28                 |
| Number of Protection Orders Granted by Default                                     | 37                 |
| Number of Protection Orders Agreed To  | 48                 |
| Number of Cases Were Taken to Trial  | N/A                |
| Number of Protection Orders Dismissed After Opened                                 | 28                 |
| Number of KLS Clients Advised Out On   | 62                 |
| Number of Protection Order Cases That Are Continuing                               | 1                  |
| Number of Protection Order Cases That Have a Motion to Extend the Protection Order | 4                  |

*Local Law Enforcement*

In Shawnee County, our community is fortunate to have three local law enforcement agencies with representation on the Mayor’s Taskforce against Domestic

Violence—the Shawnee County Sheriff’s Office, Topeka Police Department, and Washburn University Police Department. These agencies serve as first responders for

victims of domestic violence and ensure their safety through the arrest of the offenders. The full data from local law enforcement has been presented in the table below.



| <b>Law Enforcement Agencies</b>   | <b>1/1/22 to 12/31/22</b> |
|---|---------------------------|
| Total Number of Domestic Violence (DV) Calls to the Topeka Police Dept. | 1,764                     |
| Total Number of DV Arrests by the Topeka Police Dept.                   | 872                       |
| Total Number of DV Calls to Shawnee County Sheriff’s Office             | 273                       |
| Total Number of DV Arrests by the Shawnee County Sheriff’s Office       | 117                       |
| Total Number of DV Calls to the Washburn Police Dept.                   | 2                         |
| Total Number of DV Arrests by the Washburn Police Dept.                 | 1                         |

In calendar year 2022, there were a total of 2,039 domestic violence (DV) calls, and a total of 990 DV arrests by law enforcement agencies (48.6%). The vast majority of these calls (86.5%) and

arrests (88.1%) were handled by the Topeka Police Department. During the 2022 calendar year, the Topeka Police Department provided completed lethality assessment

screening tools with YWCA Northeast Kansas and the Family Peace Initiative. The table below highlights the data that was compiled from these completed lethality assessments.

| <b>Results from the Topeka Police Department’s Lethality Assessments</b>                       | <b>1/1/22 to 12/31/22</b> |
|--|---------------------------|
| Number of Lethality Assessments Completed by the Topeka Police Department                      | 992                       |
| Number of Unique Offenders/Batterers   | 834                       |
| Number of Repeat Offenders/Batterers   | 158                       |
| Percent of Victims Who Reported their Offender/Batterer Threatened to Kill Them/Their Children | 47.3%                     |
| Percent of Victims Who Reported their Offender/Batterer Threatened Them with a Weapon          | 45.3%                     |
| Percent of Victims Who Reported their Offender/Batterer Might Try to Kill Them                 | 50.6%                     |
| Percent of Victims Who Reported their Offender/Batterer Has a Gun or Can Easily Get One        | 40.7%                     |
| Percent of Victims Who Reported their Offender/Batterer Has Ever Tried to Choke Them           | 52.0%                     |
| Percent of Victims Who Scored High on the Lethality Assessment                                 | 79.0%                     |

*Disability Rights Center of Kansas*

Disability Rights Center of Kansas offers free legal representation to domestic violence victims, as it relates to the crime who have disabilities. Their staff can also assist in the filing of protection from abuse and protection from stalking orders in Shawnee County. This is a valuable resource to many victims of domestic violence as a means for increasing their safety and their children’s safety.

According to the National Domestic Violence Hotline, “people with disabilities have a higher lifetime prevalence of experiencing abuse than people without disabilities” (2018).

In 2022, Kansas Disability Rights Center of Kansas served **70** domestic violence victims with disabilities in 2022.



*Battering Intervention Programs*

There are two Kansas Office of the Attorney General certified battering intervention programs (BIPs) in Shawnee County: Family Peace Initiative (located at 200 SW 33rd St., Topeka) and Washta’ge Peacemakers Men’s Project (907 SW 10th Ave., Topeka). These agencies hold domestic violence offenders accountable and help them “build

skills to engage in strong, healthy relationships free from cruelty, abuse, and violence” (Halley Counseling Services, 2022).

In calendar year 2022, the Family Peace Initiative and Washta’ge Peacemakers Men’s Project had a total of **34** participants completing BIPs.

Additional data regarding Family Peace Initiative’s BIP services in Shawnee County has been presented in the table below.



| Family Peace Initiative—BIP Services             | 1/1/22 to 12/31/22 |
|--|--------------------|
| Number of Referrals to BIP                       | 64                 |
| Number of Voluntary Participants                 | 3                  |
| Number of Court-Ordered Participants             | 76                 |
| Number of Referrals from Other Service Providers | 14                 |
| Number of Assessments Completed                  | 104                |
| Total Number of Participants Completing BIP      | 34*                |

\*Some BIP completers began their classes prior to 1/1/22.



## Medical/Health Providers

Many times victims of domestic violence have contact with medical and health providers at some point during their victimization, and in Shawnee County, our community is no different. Stormont Vail Health has implemented a safety tool to

screen for abuse, domestic violence, and human trafficking. Although the majority of their patients are residents of Shawnee County, it is worth noting that some of these patients may reside outside of the County lines.

Additionally, through the Mayor’s Taskforce against Domestic Violence, Stormont Vail Health has shared their domestic violence screening tool with GraceMed Health Clinic, who will begin utilizing this screening tool in 2023.

### Stormont Vail Health

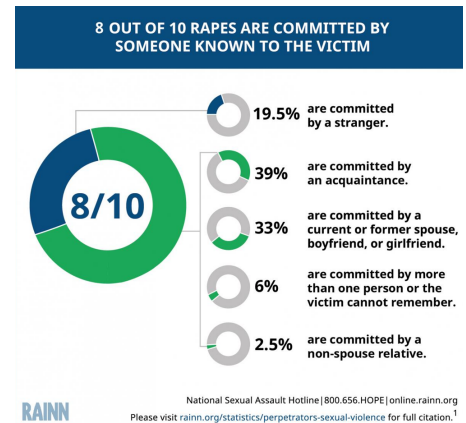
1/1/22 to 12/31/22

Number of Patients Who Were Flagged for Abuse, DV, and Human Trafficking

339

Stormont Vail Hospital has partnered with YWCA Northeast Kansas’ Center for Safety and Empowerment (YWCA CSE) to offer safe and confidential advocacy services during their Sexual Assault Nurse Examinations (SANE) or medical forensic examinations. This collaboration has been quite successful in making sure that SANE patients’ medical and emotional needs are addressed after experiencing a sexual assault. Sexual violence is a tactic that domestic violence offenders may use to gain power and control over their victim. Nationally,

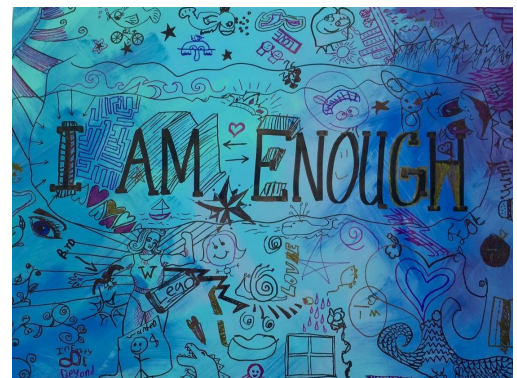
one-third of all rapes are committed in an intimate partner or former intimate partner relationship (RAINN, 2022). At Stormont Vail Health in 2023, YWCA CSE advocates provided victim accompaniment to 67 unique individuals, offering this service a total of 75 times. Twelve of the 67 patients served (17.9%) were identified as a victim of domestic violence by the YWCA CSE advocate working with them.



## Victim Service Providers

The Kansas Department of Corrections and YWCA CSE both reported having served victims of domestic violence who lived in Shawnee County in 2022. The

number of victims served by these agencies is reflected in the table below.



### Victim Service Providers—Number of Shawnee County Residents Served

1/1/22 to 6/30/22

Kansas Department of Corrections

108

YWCA CSE

869

*Demographic Information of Victims Served by YWCA CSE*

YWCA CSE is the only agency dedicated to serving victims of domestic violence in Shawnee County. In order to capture a greater understanding of those victims served through YWCA CSE, the agency put together a breakdown of the demographic information provided on the 869 Shawnee County residents served.

The demographic information is based on clients’ self-reports and is provided in the table to the right.

\*LatinX represents ethnicity and is not included in the total number of clients based on their racial identity.

| Demographics                     | 1/1/22 to 12/31/22 |
|----------------------------------|--------------------|
| <b>Age</b>                       |                    |
| Under 18                         | 19                 |
| 18-35 years                      | 410                |
| 36-55 years                      | 351                |
| 56+ years                        | 84                 |
| Unknown                          | 5                  |
| <b>Gender Identity</b>           |                    |
| Male                             | 38                 |
| Female                           | 824                |
| Trans/Gender Non-binary/Intersex | 4                  |
| Unknown                          | 3                  |
| <b>Race/Ethnicity</b>            |                    |
| American Indian/Alaskan Native   | 33                 |
| Asian/Other Pacific Islander     | 5                  |
| Black/African American           | 164                |
| Native Hawaiian                  | 1                  |
| White                            | 519                |
| Multi-Racial                     | 51                 |
| Unknown                          | 96                 |
| LatinX                           | 111*               |
| <b>Sexual Orientation</b>        |                    |
| Asexual/Bisexual/Pansexual       | 30                 |
| Gay/Lesbian                      | 8                  |
| Heterosexual                     | 407                |
| Unknown                          | 424                |

*Thank You!*

The Mayor’s Taskforce against Domestic Violence is comprised of professionals from various fields who are dedicated to meeting on a monthly basis to hold domestic violence offenders accountable and ensure victim safety. Members of this Taskforce include representation from Adult Protective Services – Kansas Department for Children and Families, Blue Cross & Blue Shield of Kansas, City of Topeka, Community Care Network of Kansas, Disability Rights Center of KS, Family Peace Initiative,

GraceMed Health Clinic, KLS, Metropolitan Topeka Airport Authority’s Police and Fire Department, The Office of Victim Services – Kansas Department of Corrections, SENT Topeka, Shawnee County District Attorney’s Office, Shawnee County Sheriff’s Office, Stormont Vail Health, Topeka Police Department, Topeka Rescue Mission, Valeo Behavioral Healthcare, Washburn University Police Department, Washburn University School of Law, Washta’ge Peacemakers Men’s Project, and YWCA Northeast Kansas. The Mayor’s Taskforce against Domestic

Violence welcomes new members who are dedicated to the elimination of domestic violence in Shawnee County.

To learn more about our work or to join our email list serve, please feel free to contact Becca Spielman, Program Director, YWCA CSE by email at [beccas@ywcaneks.org](mailto:beccas@ywcaneks.org). A huge thank you to the members of the Taskforce who spent numerous hours compiling their data in order to make this report possible.